

# PKF COOPER PARRY

## MEET THE CORE TRANSACTION SERVICES TEAM

### What you can expect...

- A focussed approach on areas that matter to you – not just a tick in the box
- Clear advice backed by insightful supporting analysis and experience
- Deal centric findings – recommendations that go straight to deal protection, value or day-one financial reporting needs
- A dedicated team with regular updates and proactive communication

### Our recent project experience in the last year...

- Buy-side DD on an acquisition in the Waste Management sector
- Pre-acquisition DD on multiple acquisitions for a client in the Service industry
- Facility and covenant reporting to lenders to a corporate in the steel sector
- Buy-side DD for a West Midlands corporate in the Media sector
- Buy-side DD on an electrical products manufacturer in the North East
- Grant due diligence on numerous project applications to East Midland funding bodies
- Buy-side DD on the MBO/PE investment in a technology equipment supplier
- Buy-side DD for a Midlands manufacturer in the Industrials sector

### Contact us...

For any questions or further information on our services, please contact Edward Gray:

Email: [edwardg@pkfcooperparry.com](mailto:edwardg@pkfcooperparry.com)

Mobile: 07760 105932

Office: 01332 411163

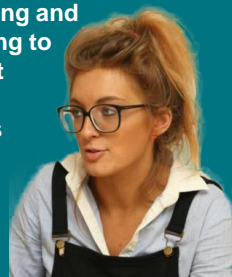
### Edward Gray



Ed heads up the Transaction Services team. He joined in 2016 after over 16 years at EY, spending the last 10 years specialising in financial due diligence delivering buy-side and sell-side support to a wide range of corporate and private equity clients, based both in the UK and overseas. Recent sector experience includes Automotive, Manufacturing and Business/Consumer Services.

Jemma joined in 2012 and completed her ACA training whilst working in the audit team. Jemma has worked with a wide range of clients, including those in the Insurance, Construction, Manufacturing and Automotive sectors. Moving to TS full time in 2016, recent projects include a client secondment to support its successful AIM listing.

### Jemma Peat



Ioanna-Maria began her training at Deloitte in 2010 and joined PKF Cooper Parry in 2013. After a 6-month secondment assisting with a client's IPO and IFRS conversion, Ioanna-Maria joined the Transaction Services team and has since worked on various projects, including within the Service sector, and was promoted to manager in 2016.

### Ioanna-Maria Ioannou



“Thank you for all the work you did on the project – it was really appreciated both by the bank and also the customer. The detailed work you did has allowed us to gain approval for their facilities and we are now moving forward with the [project] development. The customer really valued your input. Thanks for working on this so quickly.”

Claire Lees, Relationship Director - HSBC Corporate Banking (January 2017)

“The report was comprehensive and well set out and was exactly what we were looking for in terms of assurance and information to proceed - so much so, we had no specific comments or follow up questions for Ed or his team!”

Danielle Gillett, Executive Director - EMB-Group Ltd (October 2016)

  
**PKF Cooper Parry**  
Discover the difference

# PKF COOPER PARRY

## SELECTION OF DEALS SUPPORTED IN 2016

### FUNERAL PARTNERS LIMITED

has acquired

### AARON BLACK FUNERAL DIRECTORS LIMITED

PKF Cooper Parry provided financial and tax due diligence services and SPA support to Funeral Partners Limited

### FUNERAL PARTNERS LIMITED

has acquired

### EXETER & DISTRICT FUNERAL SERVICE LIMITED

PKF Cooper Parry provided financial and tax due diligence services and SPA support to Funeral Partners Limited

### STOCKS TAYLOR BENSON LIMITED

has acquired

### SHINE DESIGN SERVICES LIMITED

PKF Cooper Parry provided financial and tax due diligence services to Stocks Taylor Benson Limited

### TCL GROUP

has acquired

### PLANTScape LIMITED

PKF Cooper Parry provided tax and financial due diligence services to TCL Group

### TCL GROUP

has acquired

### ICE WATCH LIMITED

PKF Cooper Parry provided tax and financial due diligence services to TCL Group

### WHITES GENERATION LIMITED

has acquired

### FERNBROOK BIO LIMITED

PKF Cooper Parry provided financial and tax due diligence services to Whites Generation Limited

### CALLOW CAPITAL 1 LIMITED

has invested in

### UK CIRCUITS AND ELECTRONIC SOLUTIONS LIMITED

PKF Cooper Parry provided financial and tax due diligence services to Callow Capital 1 Limited

### FORESIGHT GROUP

has supported the MBO of

### AGAR SCIENTIFIC LIMITED

from Elektron Technology PLC. PKF Cooper Parry provided financial and tax due diligence services to Foresight Group

“The [financial due diligence] report was a good quality, well written report and told us what we needed to know, covering the areas we had discussed upfront. I liked the ‘traffic light’ approach used to highlight the potential degree of impact of key findings on the transaction. There were no surprises as Ed had kept me up to date with progress and it was reassuring that the sensitivities highlighted by PKF Cooper Parry were in line with our commercial team’s view.”

Rob Cross, Finance Director - Claverley Group Limited (June 2016)

  
**PKF Cooper Parry**  
Discover the difference